

学校法人瓶井学園
瓶井学園日本語学校京都校

KAMEI GAKUEN JAPANESE LANGUAGE SCHOOL KYOTO



学校法人瓶井学園

KAMEI GAKUEN GROUP

「因材施教，提升各自技能」专门学校

PROFESSIONAL TRAINING COLLEGE THAT "IMPROVES THE SKILLS OF EACH INDIVIDUAL"



学校法人瓶井学園位于大阪市东淀川区【上新庄】地段，创建于1935年。分别设立了「日本理工情报专门学校」「日本计算机专门学校」「日本医疗福祉专门学校」。并于2019年在京都市山科区设立了「瓶井学園日本語学校京都校」。

姐妹校 Group School



汽车维修学科
Automobile Engineering
course



建筑设计学科
Architectural Design
course



电子・信息工学学科
Electronics & IT Engineering
course



机器人系统学科
AI・LOT
course



临床工学学科
Clinical Engineering
course

〒533-0015 大阪府大阪市东淀川区大隅1-1-25

1-1-25 OSUMI HIGASHIYODOGAWA-KU OSAKA-CITY OSAKA JAPAN



: 06-6329-6553



: <https://www.kamei.ac.jp>



: info@kamei.ac.jp



Scan Me

瓶井学園日本語学校京都校

KAMEI GAKUEN JAPANESE LANGUAGE SCHOOL



瓶井学園日本語学校京都校是隶属于总部位于大阪的瓶井学園旗下的一所语言学校。创建于2019年4月。致力于培养和提高来自世界各地的留学生的日语，针对每个人的能力和需求，因材施教，细致教学，全方面助力留学生的升学指导以及留学生活。

Kamei Gakuen Japanese Language School Kyoto opened in April 2019 as one of the group schools of Kamei Gakuen, which is headquartered in Osaka. International students are working hard to study Japanese every day. We focus on providing detailed support tailored to each student's academic ability, guidance on advancing to higher education, and support in daily life.

公式SNS!
学校最新动态
Click here for our
School Media



Why Kyoto? 选择京都留学的理由?



作为日本曾经的首都
拥有千年以上的历史

1200 years of history
as the capital of Japan

在京都，能够在日常生活的不经意间便接触到日本的历史文化。

Kyoto is a city where you can experience and learn about the culture and history of Japan in your daily life.



日本第一的学生之城

University capital of Japan

京都市的人口每10人中就有1人是大学生，学生所占比例绝对为日本第一。

One in ten people is a university student in Kyoto. The university student is the highest population rate in Japan



世界屈指可数的观光地
丰富的自然资源

World's leading tourist
destinations & abundant nature

充满着魅力的京都，拥有众多的世界文化遗产。

Kyoto is a city which is most attractive and world heritage sites

本校的特色

Characteristics of Our School

01

学校法人・内部升学制度

可以享有通学，升学面试的交通费学割。
学园内的各个学科，有内部進学制度。



Student commuter passes and long-distance train discounts are available. Internal admission to departments within the group is possible.



02

温馨的家庭氛围

小班制精细化教学，学生与老师的距离很近，
在温馨的家庭氛围中学习。

The classes are small, students and teachers are close to each other, and students can learn in a homely atmosphere.



03

国际化

来自中国・越南・香港・尼泊尔・缅甸等国家的
留学生在本校就读。通过和世界各国学生的交流
学习，开阔自己的国际视野。

Our school has students from countries such as China, Vietnam, Hong Kong,, Nepal, and Myanmar, and through interaction with people from various countries, you can broaden your horizons by learning about different cultures and ways of thinking.



本校的特色

Characteristics of Our School

升学・就职指导・个别咨询



根据每个学生的升学或就职等不同目的，
提供无微不至的帮助。

We provide detailed guidance tailored to each individual's goals for career paths such as higher education and employment.

04



茶道・书法等丰富多彩的课外活动



学校定期举办各种课外活动，
通过交流来接触传统的日本文化。

You can experience Japanese culture and traditions
through field trips and various activities.

05



坚实的留学支援



享受留学生医疗费补偿制度，
自己负担30%的医疗费可以得到补偿。
即使是第一次出国留学，也可以安心生活！

Current students can take advantage of the international student compensation system that covers their own medical expenses (30%). We support people living alone in Kyoto for the first time.

06

课程介绍

Characteristics of Our School



1

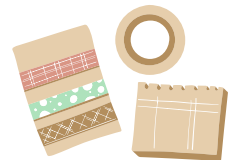
长期升学课程 2年・1.5年 Course 2years 1.5years

长期课程：根据学生的日语程度安排相应的教学课程，从基础开始系统地学习日语。不仅提高听说读写的4项技能，还同时培养和提升学生具备进入大学院・大学・专门学校的综合日语能力。

With a curriculum tailored to your level, you can systematically learn Japanese from the basics. Comprehensive study of the Japanese language skills necessary to enter a vocational school or university after completing the course. In addition to improving the four skills of listening, speaking, reading, and writing, students can also study at vocational schools and universities. This is a long-term course that can also be used to take entrance exams and the Japanese Language Proficiency Test.

2

短期课程 2周～3个月 Short time course 2weeks～3months



短期课程：适合除『留学』签证之外的学习者。（日本在住、短期滞在）
学习时间必须二周以上。

Short-term study courses are available for residence statuses other than "Student" such as short-term stay and working visa. This is a short-term course for people visiting Japan. At our school's Japanese department, at least studying Japanese over two weeks.

入学时间

长期课程 Long term course

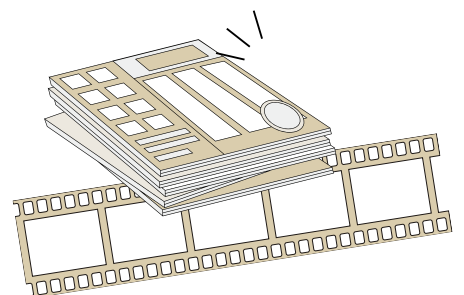
入学时间： 4月・10月
Enrolment Period
April ・ October

短期课程 Short term course

入学时间：请咨询
Enrolment Period
Inquiry

上课时间 半天制

每周5天（周一～周五）45分钟 5节课
From Monday to Friday 45min x 5
上午班 9:05～13:10
Morning Class
下午班 13:40～17:45
Afternoon Class



游学课程(暑假的一周或两周)

Seasonal Course



课程
Course 上午集中学习日语 9:05~12:20
Japanese Language Lessons in the Morning
下午每周2次 日本文化体验课
Experience Japanese Culture in the Afternoon, one week two times
周六·日课外活动
Extracurricular Activity on Saturday or Sunday

日本传统文化体验 Experience Japanese Culture



浴衣体验
Yukata Experience



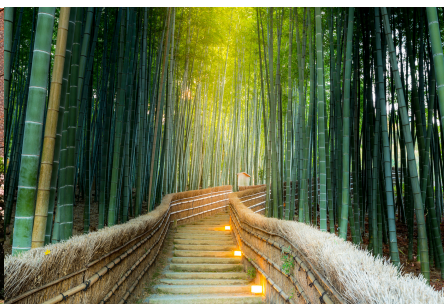
寿司体验
Sushi Experience



茶道体验
Tea Ceremony Experience



名校参访
University Tour



京都市内观光
Kyoto City Sightseeing



历史文化体验
Japanese History Experience

「学玩并重」体验京都的魅力！

Experience Japanese culture while studying Japanese and enjoy the charm of Kyoto!



年間行事

ANNUAL SCHEDULE

4月 April

入学式

Entrance Ceremony

入学説明

Orientation



5月 May

健康検査

Health Check

前期校外活動

Off Campus Study



6月 June

日本留学考試

EJU

小学校交流会

Elementary School Event



7月 July

七夕節

Tanabata Festival

日本語能力考試

JLPT



8月 August

暑假

Summer Holiday

升学・就職指導

Guidance



9月 September

前期期末考试

First term Exam



年間行事

ANNUAL SCHEDULE



10月 October
入学式
Entrance Ceremony
开始授课
Class Begin



11月 November
日本留学考试
EJU
文化节
Cultural Festival



12月 December
寒假
Winter Holiday
日本語能力考试
JLPT



1月 January
新年
New Year
新年参拜
Hatsumode



2月 February
后期期末考试
Second term Exam
学习发表会
Learning Recital



3月 March
毕业式
Graduation Ceremony
春假
Spring Holiday

学费

Tuition Fee



项目 Item	金额 Amount	备注 Remark
选考料 Registration Fee	20,000 日元/yen	
入学金 Admission Fee	60,000 日元/yen	
授课料 Tuition Fee	660,000 日元/yen	
教材费 Text Book Fee	20,000 日元/yen	1 年分 one year
校外活动费 Extracurricular Activity Fee	20,000 日元/yen	1 年分 one year
学生厚生费 Welfare Fee	16,000 日元/yen	1 年分 one year
第一年学费合计 Total	796,000 日元/yen	

寮费

Dorm fee



寮名 Dorm	寮费 Dorm Fee	备注 Remark
女子寮 Girls Dorm	20,000~22,000 日元/yen	2~3 名房间 2~3 person one room
男子寮A・B Boys Dorm A・B	19,000~25,000 日元/yen	1~3 名房间 2~3 person one room



校舍・设施
School Building・Facility



教室
Classroom



自习室
Study Room



接待室
Meeting Room



活动室
Activity Room

校舍周边
Around the School



山科区役所
Yamasina Ward Office



医院
Nagistuji Hospital



唐吉柯德
Donki Store



超市
Supermarket



便利店
Convenience Store

学校交通 SCHOOL MAP



京都市地下鉄东西线
Kyoto City Subway Tozai Line

「柳辻站」徒歩13分

From 「Nagistuji Station」 on
foot 13 minutes



学校介绍中文
School Introduction
In Chinese

学校法人
瓶井学園日本語学校京都校

〒607-8211 京都府京都市山科区勧修寺東栗栖野町83
83 Higashikurisuno-cho, Kanshuji, Yamashina-Ku, Kyoto Japan

☎ : 075-205-5374
🌐 : <https://nihongo.nrj.ac.jp>
📘 : <https://www.facebook.com/kyoto.kamei>

HOME PAGE



KAMEI GAKUEN

<https://nihongo.nrj.ac.jp>

